

## Polyethersulfone (PES) Disc membrane

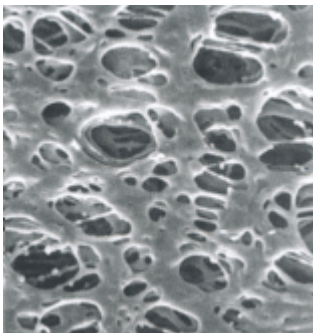
### Picture



### Features and Benefits

- High flow rates and throughputs due to a highly asymmetric pore structure
- Inherently hydrophilic
- Low protein binding characteristics
- Good chemical compatibility
- Superior thermo stability

### Morphology



### Applications

- raki and beer filtration
- especial chemical reagent filtration
- liquid of high temperature filtration

### Product Description

The highly asymmetrical pore structure of our Micro PES flat membrane offers a high dirt loading capacity, increasing the filtration performance to give higher throughputs and higher flow rates than symmetrical membranes.

Product types	Nominal Pore Size [μm]	Bubble point in IPA [Bar] [psi]		Min.TMF** [ml/min cm2 bar]
1F PH	0.04	2.8*	40 6	4
2F EL	0.1	2.8*	29 9	10
2F	0 2	4 3	62 4	35
4F	0 45	3 0	43 5	60
5F	0 5	2 3	33 4	90
6F	0 65	1 9	27 6	90
8F	0 8	1 4	20 3	245
12F	1 2	1 0	15 2	260

(\*)(in IPA)  
 (\*) (TMF=Transmembrane Flow)

### Specifications

Part #	Material	Diameter (mm)	Qty (PK)	Pore Size (μm)
MFPE200PXX	PES	φ200	20	0.22 0.45
MFPE150PXX		φ142	20	
MFGF100PXX		φ100	20	
MFGF50PXX		φ47	100	
MFGF25PXX		φ25	50	